



# *Manor*

## HOUSE RESIDENCE

*"A magnificent and unique Manor House estate..."*



# Manor

HOUSE RESIDENCE



## "PROPERTY AREAS"

8,853 sqm plot

956 sqm covered area

*"Excellent finishes and refinement..."*

7 bedrooms including 4 suites

Private pool and extensive gardens

Solid oak floors

Air conditioning

Central and under floor heating

Fireplace

Fitted wardrobes

Marbles

Furniture and kitchen appliances included

Private lake

Caretaker's house

Guest house

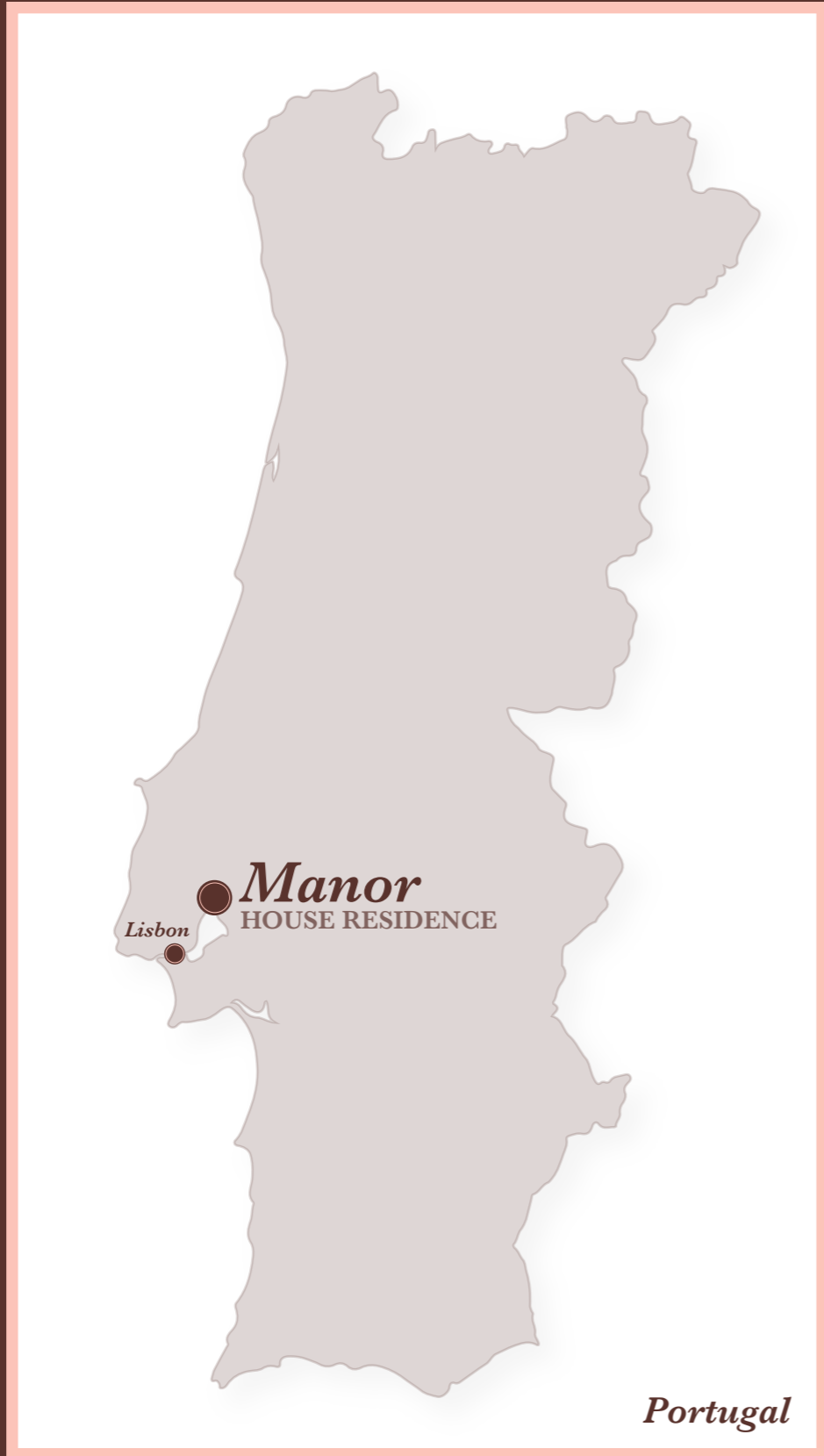
Cellar

Garage parking for 6 cars





*Manor*  
HOUSE RESIDENCE



**"DISTANCES BETWEEN MAIN CITIES:**

- Lisbon at 26 kms
- Vila Franca de Xira at 4 kms
- Cascais at 60 kms



*Manor*  
HOUSE RESIDENCE



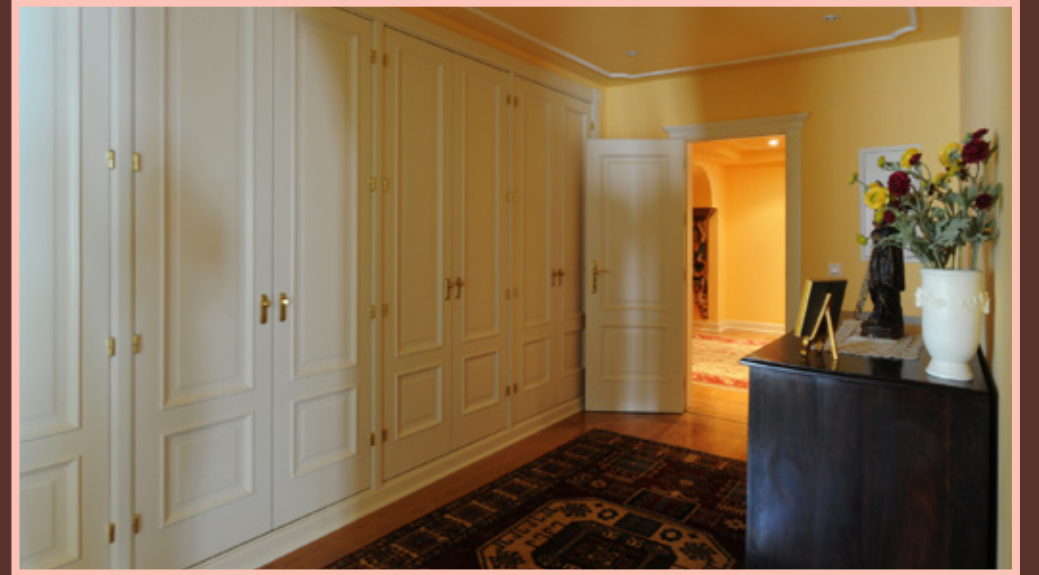
**"FACILITIES AROUND"**

- Hospital at 5 kms
- Medical Center at 700 meters
- School at 700 meters
- Shopping area at 700 meters
- Golf Course at 32 kms





*Manor*  
HOUSE RESIDENCE



*"A magnificent and unique  
Manor House estate..."*





*Manor*  
HOUSE RESIDENCE







# *Manor* HOUSE RESIDENCE

By

Avanti  
WORLDWIDE

**AVANTI Group Limited**

Operating office: Avanti House, PO BOX 87

Kissonerga 8574

Paphos, Cyprus

**UK Tel:** + 44 (0) 845 474 5274

**Portugal Desk**

**Tel:** +351 961 365 400

**Email:** francisco.cunha@avantiworldwide.com

**Site:** www.avantiworldwide.com